



Garden

A Look at the picture of the garden in your dictionary. Write the color of each flower.

- | | |
|---------------------|-------------------------|
| 1. <u>red</u> roses | 6. _____ irises |
| 2. _____ lilies | 7. _____ chrysanthemums |
| 3. _____ marigolds | 8. _____ daffodils |
| 4. _____ geraniums | 9. _____ violets |
| 5. _____ daisies | 10. _____ sunflowers |

B Write the names of five trees and five flowers.

Trees

elm

Flowers

daffodils

C Complete the sentences.

- Most flowers grow from seeds.
- Other flowers grow from _____. You plant them in the fall, and they come up the next spring or summer.
- _____ go into the soil and bring water to the plant.
- _____ is an example of an evergreen tree. It is green all year.
- Many commercial flower growers start seeds in a _____.
- Most trees have a strong central _____.
- Many _____ grow from the trunk.
- In the fall, _____ turn colors and fall from the trees.
- In a pine tree, the seeds are found in the _____.

D Put the steps in order.

- _____ The buds open and flowers fill the garden.
- _____ The seed sends roots into the soil.
- _____ Small buds grow on the stem.
- 1 A gardener plants the seeds.
- _____ A small stem grows and leaves start to appear.

E Write the name of the tree for each leaf or seed.

pine tree

elm tree

maple tree

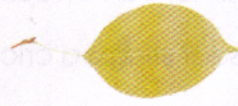
~~oak tree~~



1. oak tree



2. _____



3. _____



4. _____



CD 3
Track 7

F Listen to the description of each flower. Write the number of the flower under the correct picture.

a.



b.



c.



d.



e.



1

Word Work Partners

Discuss or write the answers to the questions.

1. Do you ever buy flowers for anyone? What is the occasion?
2. What kind of flowers do you sometimes buy for your house?
3. What flower would you like to receive for your birthday?
4. What flowers do women often carry when they get married?
5. Do you have a garden? What flowers do you grow?



Desert

A Circle the correct answer.

1. Which animal is more dangerous: a scorpion or a grasshopper?
2. Which animal can be poisonous: a snake or a moth?
3. Which insect has eight legs: a spider or a fly?
4. Which animal moves more slowly: a rat or a tortoise?
5. Which animal lives longer: a coyote or a tortoise?
6. Which insect can jump: an ant or a grasshopper?
7. Which animal can attack people: a mountain lion or a camel?
8. Which insect stings: a cricket or a scorpion?

B Match the words and their definitions.

- | | |
|-----------------------|---|
| <u>g</u> 1. sand dune | a. a small rock |
| _____ 2. boulder | b. a place in the desert with water and trees |
| _____ 3. oasis | c. a tree with no branches and with large leaves at the top |
| _____ 4. palm tree | d. an area with little rain |
| _____ 5. desert | e. a large rock |
| _____ 6. pebble | f. a green desert plant that sometimes has needles |
| _____ 7. cactus | g. a hill of sand |

C Read each description. Write the name of the desert animal.

a camel	a mountain lion	an ant
a vulture	a lizard	a coyote

1. This animal belongs to the dog family. It is the size of a medium-sized dog. It has a long nose, pointed ears, and a long tail. This animal is usually gray or tan. At night, it barks or cries very loudly. a coyote

2. This large animal walks slowly across the desert. It can go for many days without food or water. It lives off the fat that it stores in the hump on its back.

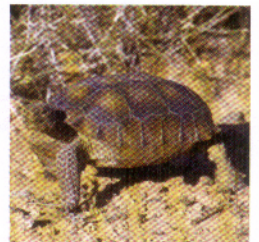
3. This reptile has a long tail. It spends most of the day on warm rocks, waiting for insects to fly by. It catches the insects with its tongue. _____
4. This large bird is always looking for a free meal. It doesn't hunt. It flies for many hours, looking for dead animals to eat. _____
5. This common insect lives in a colony, where all the members work together. It can carry many times its weight. _____
6. This strong animal is part of the cat family. It hunts other animals. It often waits behind a boulder until a smaller animal is near. Then, it jumps out and attacks.



CD 3
Track 8

D Listen to each conversation between two people at a zoo. Then, read each statement and circle T for true or F for false.

- | | | |
|---|---|------------------------------------|
| 1. Tortoises live in the water. | T | <input checked="" type="radio"/> F |
| 2. Tortoises can grow to five feet long. | T | F |
| 3. Many animals attack tortoises. | T | F |
| 4. Tortoises eat insects such as scorpions and flies. | T | F |
| 5. Tortoises have strong teeth. | T | F |
| 6. There are more than 135 species of owls. | T | F |
| 7. Owls sleep at night. | T | F |
| 8. Owls eat insects and small birds. | T | F |
| 9. Owls move their eyes from side to side. | T | F |
| 10. Owls have ears. | T | F |



Word Work Partners

Write a description of one of the animals in the desert. Don't write the name of the animal in your description. Read your description to the class. Can the other students guess the animal? (See Activity C for examples of how to write your descriptions.)



Rain Forest

A Try this crossword puzzle. Write the name of the animal.

Across

2



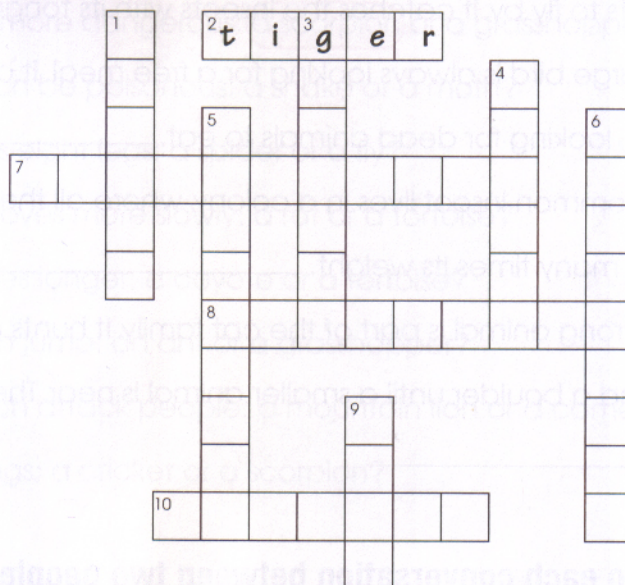
7



8



10



Down

1



4



6



3



5



9



B Write the words in the correct group.

chimpanzee	hummingbird	wasp	peacock	butterfly
aardvark	monkey	parakeet	alligator	beetle
caterpillar	flamingo	tarantula	gorilla	parrot

Animals

chimpanzee

Birds

Insects

_____	_____	_____
_____	_____	_____
_____	_____	_____
_____	_____	_____

C Look at the picture of the rain forest. Complete the sentences.

1. The monkey has a long tail. It's climbing a tree.
2. The _____ spends most of its life in trees. It's holding a vine.
3. The _____ is part of the cat family. It's orange with black stripes.
4. The _____ and the _____ spend most of the day swimming in the water or lying on a riverbank.
5. The _____ has a long nose. It can dig deep into the ground to find ants and other insects.

D Write the name of each bird or animal.



1. parakeet 2. _____ 3. _____



4. _____ 5. _____ 6. _____



CD 3
Track 9

E Listen to each statement. Write the name of the correct bird or animal from Exercise D.

- | | |
|------------------------|----------|
| 1. _____ <u>parrot</u> | 4. _____ |
| 2. _____ | 5. _____ |
| 3. _____ | 6. _____ |

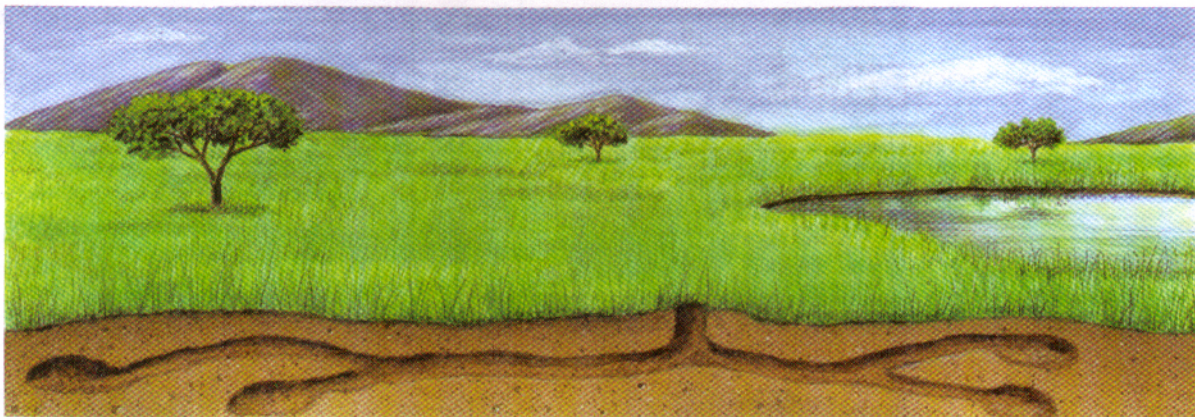
Word Work Partners

Would you like to own a parrot or a parakeet? Write two advantages and two disadvantages to owning a pet bird.



Grasslands

A Complete the paragraph.



There are large areas of grasslands on most of the continents. Trees provide a home for birds and insects, such as sparrows and _____. Tall animals, such as _____, eat leaves from the taller trees. Some animals, such as _____, spend most of the day in or near water holes. The grass provides food for many animals. The tall grass hides some of the smaller animals, such as _____ and _____. Some animals, such as _____, live in tunnels under the ground.

B Complete the sentences.

1. A giraffe is very tall and has a long neck.
2. _____ has tusks and a long trunk.
3. _____ looks like a horse with stripes.
4. _____ has long antlers.
5. _____ has a mane and a long tail.
6. _____ has two short horns on its face.
7. _____ has two strong back legs and can hop long distances.
8. _____ has long fur and two horns on its head.
9. The hard foot of a mammal is _____. The soft foot of a mammal is _____.

C Read each statement. Circle **T** if the statement is true. Circle **F** if the statement is false.

- | | | |
|--|----------|---|
| 1. Hippopotami spend most of the day in the water. | T | F |
| 2. Kangaroos are strong swimmers. | T | F |
| 3. Ostriches can fly high above the grassland. | T | F |
| 4. Elephants live in a group called a herd. | T | F |
| 5. Elephants are the largest land animals. | T | F |
| 6. Gophers live in trees. | T | F |
| 7. Lions hunt other animals for food. | T | F |
| 8. Lions runs faster than elephants. | T | F |
| 9. Gazelles have long fur. | T | F |
| 10. Antelope have tusks. | T | F |



CD 3
Track 10

E Listen to the information about five endangered animals. Check the reasons why the number of these animals is decreasing.

Loss of habitat - The population of the world is growing. People need the land for homes and for growing food, so there is less land for animals.

Hunter - This is a person who looks for and kills animals for sport or for food.

Poacher - This is a person who hunts animals illegally.

	Loss of habitat	Hunters	Ranchers and farmers	Poachers
Rhinoceros	<input checked="" type="checkbox"/>	<input type="checkbox"/>	<input type="checkbox"/>	<input checked="" type="checkbox"/>
Elephant	<input type="checkbox"/>	<input type="checkbox"/>	<input type="checkbox"/>	<input type="checkbox"/>
Cheetah	<input type="checkbox"/>	<input type="checkbox"/>	<input type="checkbox"/>	<input type="checkbox"/>
Kangaroo	<input type="checkbox"/>	<input type="checkbox"/>	<input type="checkbox"/>	<input type="checkbox"/>
Zebra	<input type="checkbox"/>	<input type="checkbox"/>	<input type="checkbox"/>	<input type="checkbox"/>

Word Work Partners

Write five questions about animals that live in the grasslands.

Ask another group your questions.

Examples: Which animal has two long legs and a long neck?
Which animal has black and white stripes?



Polar Lands

A Complete the sentences with the name of the animal.

goose	polar bear	reindeer
penguin	falcon	whale

1. A polar bear is one of the largest polar animals. It lives at sea half the time and on land the other half. It can walk up to forty miles a day.
2. _____ is a bird, but it cannot fly. It has flippers instead of wings. This animal lives in large groups, which can have 10,000 members or more.
3. _____ lives in the Arctic in the summer and then flies south for the winter.
4. _____ lives in the ocean, but it is not a fish. It is the largest mammal in the world. It must come to the surface to breathe air.
5. _____ has brown fur, but its neck and tail are white. It is a fast runner and an excellent swimmer. This animal lives in large herds of 1,000 or more.
6. _____ is the fastest bird in the world. It has very good eyes and can see food on the ground from a mile away.

B Complete the sentences. You will use some words more than once.

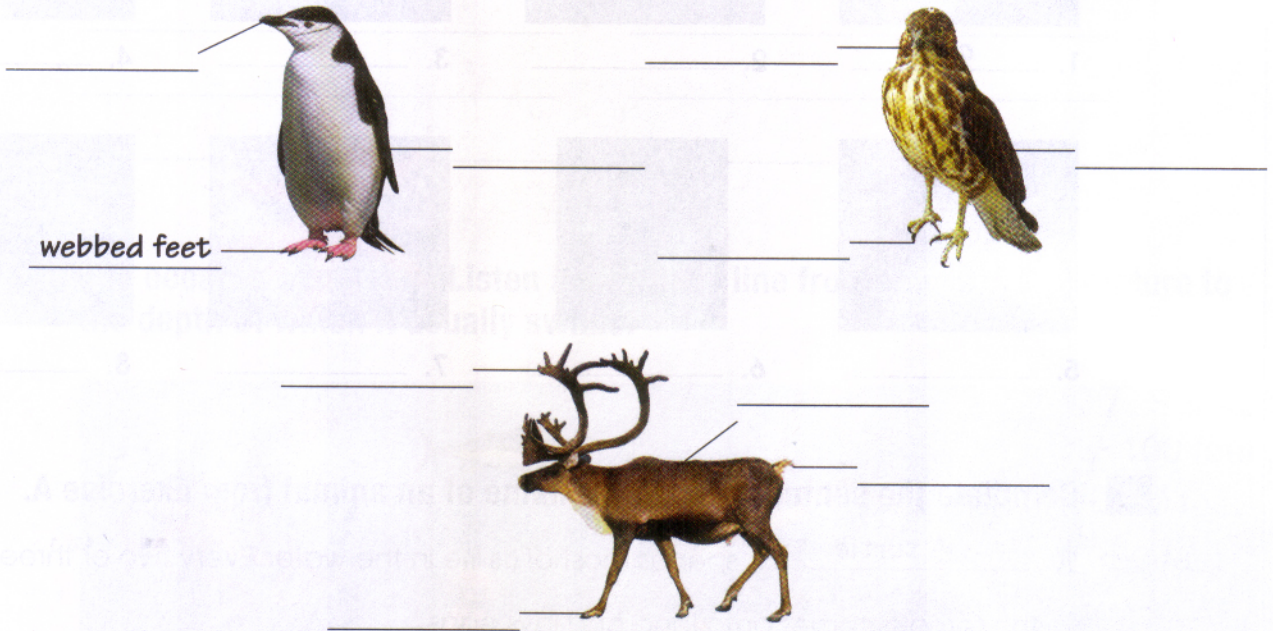
wings	beak	claws	tusks
flippers	antlers	whiskers	fur

1. An animal's whiskers protect its face.
2. An animal uses its _____ to fly.
3. An animal's _____ protects it from the cold.
4. An animal can fight with its _____, its _____, its _____, or its _____.
5. A bird uses its _____ or _____ to hold things.

6. An animal uses its _____ to swim.
7. A bird uses its _____ to open, tear, and eat food.

C Label the parts of each animal.

tail	hoof	beak	feather	claw
fur	webbed feet	antlers	flipper	



D Listen to descriptions of these four animals. Write the number of the description under the correct animal.



a. ____ b. ____ c. ____ d. ____

Word Work Small Group

Polar animals live in difficult conditions. It's cold most of the year in the Arctic. For many months, there is little or no sunlight. Snow covers the ground most of the year. How do polar bears survive in these conditions?

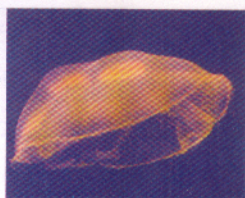


Sea animals

A Complete the sentences with the name of the animal.



1. crab



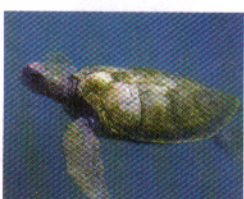
2. _____



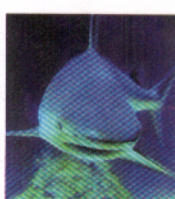
3. _____



4. _____



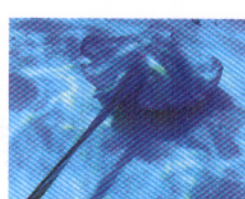
5. _____



6. _____



7. _____



8. _____

B Complete the sentences with the name of an animal from Exercise A.

1. A turtle spends most of its life in the water. Every two or three years, the female comes onto land and lays eggs.
2. With three rows of sharp teeth, _____ can be a dangerous fish. It eats other fish and sometimes even attacks people.
3. _____ lives near the beach. It can fly or land on the water. It catches small fish.
4. _____ has the shape of an umbrella. It lives near the surface of the water. Some of these animals can sting fish or people.
5. _____ has a flat body and a long tail. It can give a poisonous sting with its tail.
6. _____ is a mammal that comes to the surface every few minutes to breathe. This intelligent animal likes to jump and play.
7. _____ can be very small or as large as a dinner plate. It has eight legs and a hard shell. It can swim or walk on the beach.

C Write the names of four more sea creatures in each group.

A vertebrate is an animal with a backbone.

An invertebrate is an animal without bones. It has a soft body.

Vertebrates

shark

tuna

Invertebrates

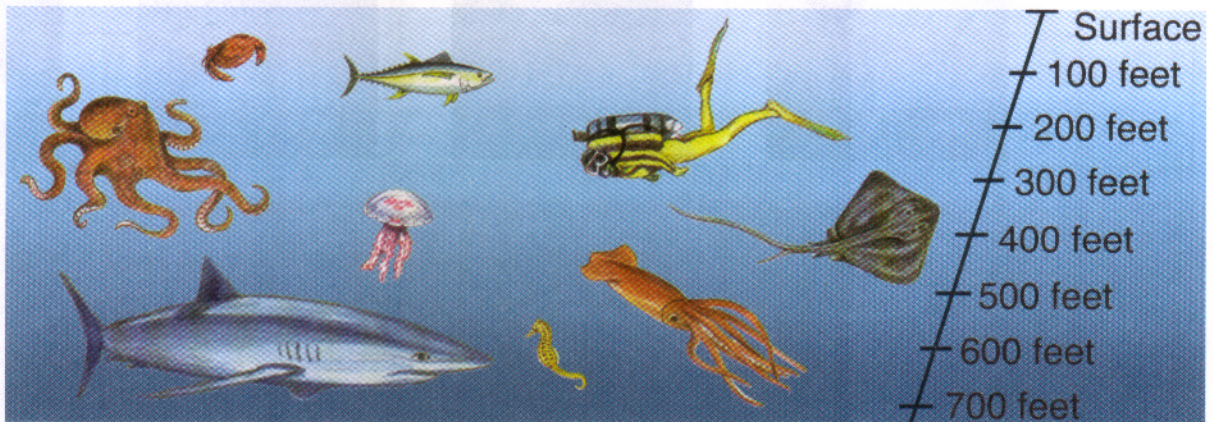
octopus

sea anemone



CD 3
Track 12

D The ocean is very deep. Listen and draw a line from each ocean creature to the depth at which it usually swims.



Word Work Small Group

Discuss or write your answers.

1. You are a fisherman. Which fish would you like to catch?
2. You are a scuba diver. Which fish would you like to see?
3. You are a scientist. Which fish would you like to study?
4. You are a film director. Which fish would you like to make a documentary about?



Woodlands

A Write the name of each animal.



1. cardinal



2. _____



3. _____



4. _____



5. _____



6. _____



7. _____



8. _____



9. _____



10. _____



11. _____



12. _____

B Write the name of the correct woodland animal.

1. This long, thin animal is usually pink or gray. It lives in the ground. It is a favorite food for birds. worm
2. This small animal has a furry tail. It can run up and down trees and jump from branch to branch. It collects nuts. _____
3. This bird has a long, sharp beak. It sits on a branch and makes holes in trees. _____
4. This large bird is the largest hunting bird. It uses its sharp claws to catch smaller animals. _____
5. This large woodland animal spends its day eating leaves, flowers, and fruit. The males grow antlers. _____

6. This animal lives in rivers and lakes. It can cut down trees with its strong front teeth. It builds its home, called a dam, in the water. _____
7. This animal walks slowly through the woods. The other animals do not bother it because sharp needles, called quills, cover its body. _____
8. This small animal is black with a white stripe on its back. When it thinks it is in danger, it gives off a terrible smell. _____



CD 3
Track 13

c Listen to the description of each animal. Write the number of the description under the correct animal.

a.



b.



c.



1

d.



e.



Word Work Small Group

Discuss or write the answers to these questions.

Which of these woodland animals live in your area?

Are any of these animals a problem in your area? Why?

Which of these animals will eat the vegetables in your garden?

Which of these animals live in the ground?

Which of these animals build nests in trees?

Word Study

Put vocabulary words into groups or categories. In this unit, you could classify animals several ways. For example:

1. Animals that run—Animals that swim—Animals that fly
2. Insects—Birds—Fish

Another way to classify words is to decide on one group and find several words that belong in that group, such as:

1. Animals that are dangerous
2. Animals that live in my country
3. Animals that are larger than I am